

# WS International



1200 Cobb Parkway North ~ #100B ~ Marietta, GA 30062-9222 USA ~ T: (770) 420-5272 ~ F: (770) 420-5350  
12701 Van Nuys Blvd ~ #H ~ Pacoima, CA 91330-7289 USA ~ T: (818) 485-8350 ~ F: (818) 485-8354

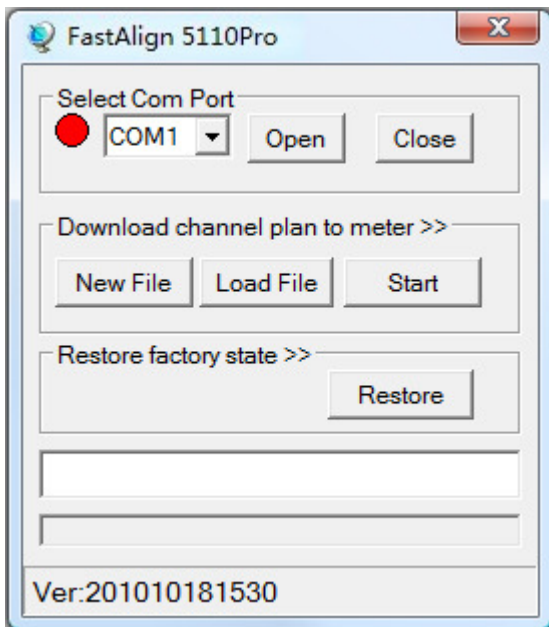
**DO:**  
**USE WITH THE**  
**LEXIUM FASTALIGN 5110PRO PROFESSIONAL SATELLITE METER ONLY**

**DO NOT:**  
**USE THIS SOFTWARE OR INSTRUCTIONS FOR THE**  
**LEXIUM FASTALIGN 5100PRO PROFESSIONAL METER**

With the LEXIUM FastAlign 5110Pro meter you have the ability to manually change satellite parameters, or you can custom make and upload your own customized satellite parameters, including TP frequency, symbol rate, polarity, LNB frequency, polarization, and 22KHz switching.

**Please read the software operations manual carefully.**

1. Unzip the downloaded file.
2. Install the USB drivers for the FastAlign 5110Pro meter first by double clicking  PL2303\_Prolific\_DriverInstaller\_v1210 to install.
3. Double click on the  "LEXIUM" to start the list loader software. Once you double click on the icon, you will see the "FastAlign 5110Pro meter Firmware" GUI below.



4. Connect the provided USB cable to the FastAlign 5110Pro meter and your PC. Power on the FastAlign 5110Pro meter. Select the correct Com port; go to "Control Panel" then "Device manager" to determine the correct Com port.

# WS International

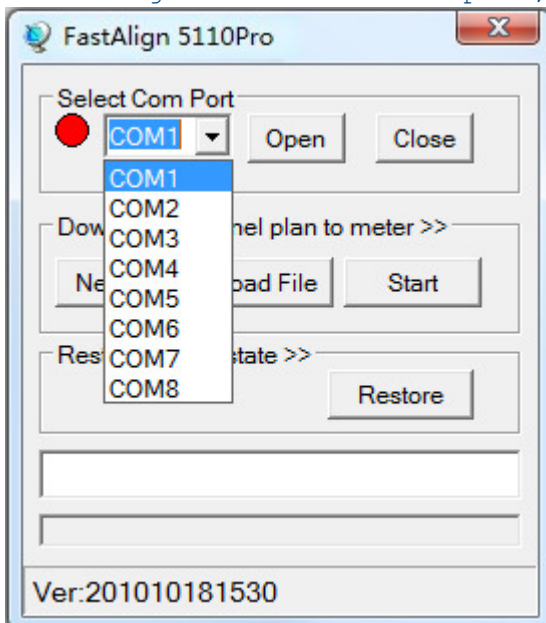
1200 Cobb Parkway North ~ #100B ~ Marietta, GA 30062-9222 USA ~ T: (770) 420-5272 ~ F: (770) 420-5350  
12701 Van Nuys Blvd ~ #H ~ Pacoima, CA 91330-7289 USA ~ T: (818) 485-8350 ~ F: (818) 485-8354

Under the Ports (COM&LPT) item, you will find 'Prolific USB-to-serial Com Port (COM?)'

Remember the COM port, which you need to set in the "ToolBox" program. If the Com port is greater than Com port 8, you will need to change it to an available comport less than 8 in the port setting tab, on your "Device Manager"



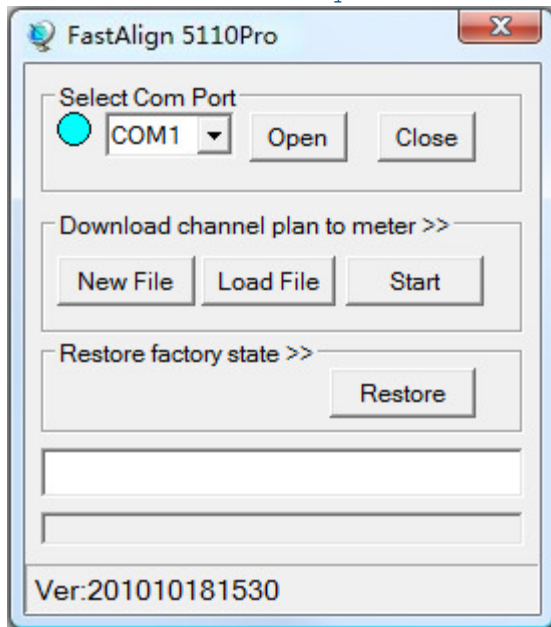
5. Selecting the correct com port, we will use 3 as an example.



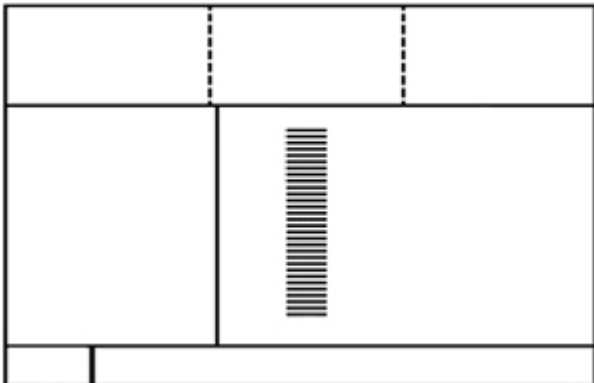
# WS International

1200 Cobb Parkway North ~ #100B ~ Marietta, GA 30062-9222 USA ~ T: (770) 420-5272 ~ F: (770) 420-5350  
12701 Van Nuys Blvd ~ #H ~ Pacoima, CA 91330-7289 USA ~ T: (818) 485-8350 ~ F: (818) 485-8354

6. Once you selected the correct com port click on the "Open" button, it will go from red color to aqua color if the correct com port is selected.



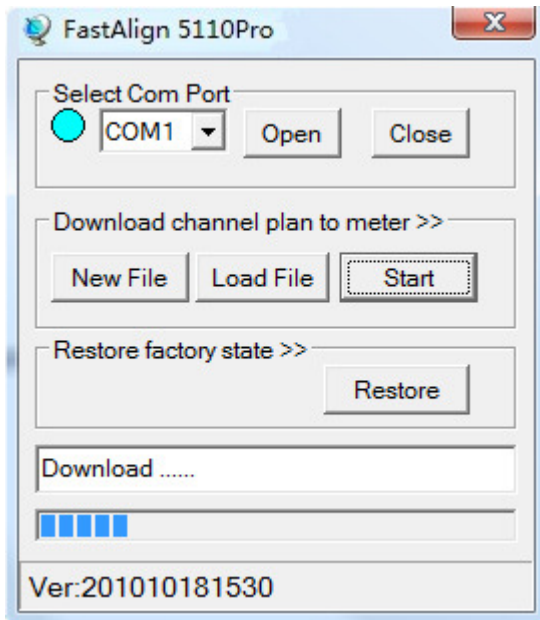
7. Click on "Load File" and select Plan  
At this point you will be able to edit the list and be able to change parameters. You can delete or add a line by selecting the line you want to delete or add and press "Delete Col" for delete and "Add Col" to add. You can only delete or add one line at a time. After you have finish editing your new list press "Save" to save it and give it a name different than Plan\_List\_. This will be your new Satellite List.
8. Once you have saved your new custom list, you will need to import it to your FastAlign 5110Pro meter.  
Power off the FastAlign 5110Pro meter.  
Hold "Load/Db" button and "Power" button on the FastAlign 5110Pro meter at the same time. This will put the FastAlign 5110Pro meter into programming mode.



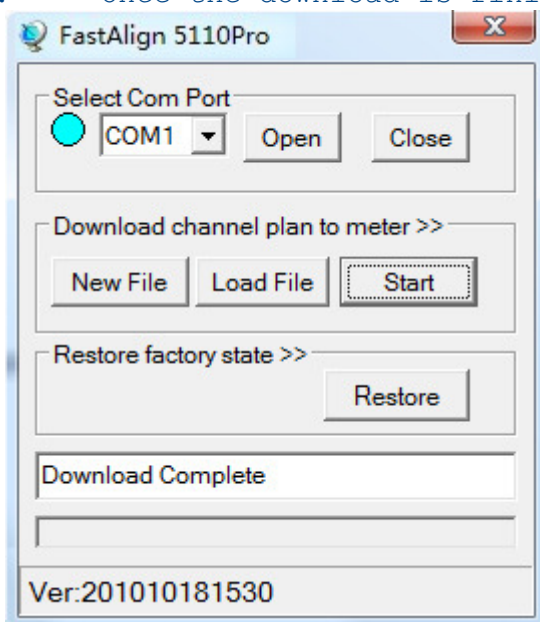
9. Click on the "Start" button to start the download. The program will show 'Download.....' with a blue progress bar.

# WS International

1200 Cobb Parkway North ~ #100B ~ Marietta, GA 30062-9222 USA ~ T: (770) 420-5272 ~ F: (770) 420-5350  
12701 Van Nuys Blvd ~ #H ~ Pacoima, CA 91330-7289 USA ~ T: (818) 485-8350 ~ F: (818) 485-8354



10. Once the download is finish you will see "Download Complete"



11. The FastAlign 5110Pro meter will power off after the download finish. Power on the meter and enter the numbers "9876" This will initialize the meter with the new list and the meter will power off. Power on the meter and it will show the new list.